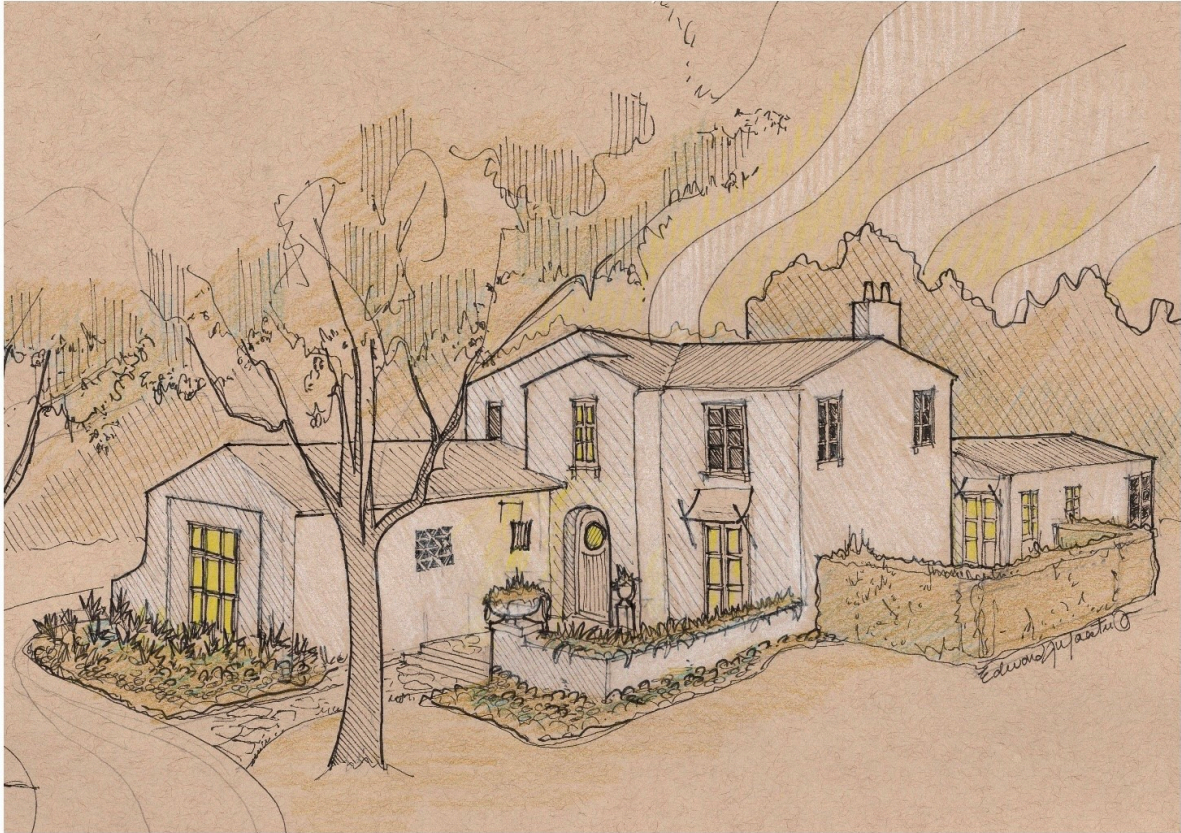


# CENTURY 21<sup>®</sup>

Judge Fite Company



## 1422 PALOMA DRIVE

5 Bedroom | 5.2 Bath | 4,734 Sqft Main House | 5,773 Sqft Under Roof  
Play/Media Room | 2-Car Garage

## 1430 N PALOMA DRIVE

DALLAS, TX 75218



\$1,999,999



3,861 sqft



4 beds



5 baths

## DESCRIPTION

Paloma Drive Estates – A Rare Opportunity in East Dallas. Welcome to Paloma Drive Estates, an exclusive, fully gated community nestled in the heart of Casa Linda. This boutique development features 15 brand-new single-family homes, each set on expansive .4+ acre lots—an exceptional offering in East Dallas where space and privacy are a true luxury. Designed by the acclaimed Eddie Maestri of Maestri Studio, these homes will combine timeless architecture with modern sophistication, making Paloma Drive Estates the most exciting residential development East Dallas has seen in decades. We are offering one of the premier lots in this limited collection—an opportunity to build your dream home in a serene, tree-lined neighborhood just minutes from White Rock Lake, the Dallas Arboretum, and all the charm of Casa Linda Plaza. Don't miss your chance to be part of this extraordinary new community where thoughtful design, generous lot sizes, and privacy come together in perfect harmony.

**PROPERTY TYPE:** Residential - Single Family Residence  
**MLS STATUS:** Active  
**MLS:** 21218290  
**YEAR BUILT:** 2025  
**COUNTY:** Dallas  
**TRACT OR SUBDIVIION:** Casa Linda  
**LIST DATE:** 03/26/2026

**CENTURY 21**

Judge Fite Company

**800.451.8055**

**AREA:**  
**SQUARE FEET:** 3,861  
**TOTAL BEDS:** 4  
**FULL BATHS:** 4  
**HALF BATHS:** 1  
**ACRES:** 0.41  
**LOT SIZE (SQFT):** 17,859

## INTERIOR FEATURES

### FIREPLACE:

- Gas

### APPLIANCES:

- BuiltInRefrigerator
- Dishwasher
- Disposal
- GasOven

## EXTERIOR FEATURES

### STYLE:

- Craftsman
- EarlyAmerican
- Traditional
- Detached

### PARKING:

- Driveway

### LOT DESCRIPTION:

- Landscaped

### POOL TYPE:

- None

## UTILITIES

### UTILITIES:

- SewerAvailable
- WaterAvailable

## ADDITIONAL PROPERTY DETAILS

### AMENITIES:

- EatInKitchen
  - OpenFloorplan
  - Pantry
  - SmartHome
  - WalkInClosets
- 

**LISTED BY:** Nadine Kelsall-Meyer 

**PHONE:** 214.585.9933

**BROKERED BY:** Meyer Group Real Estate